



FRANS CRONJE
PRIVATE CLIENTS

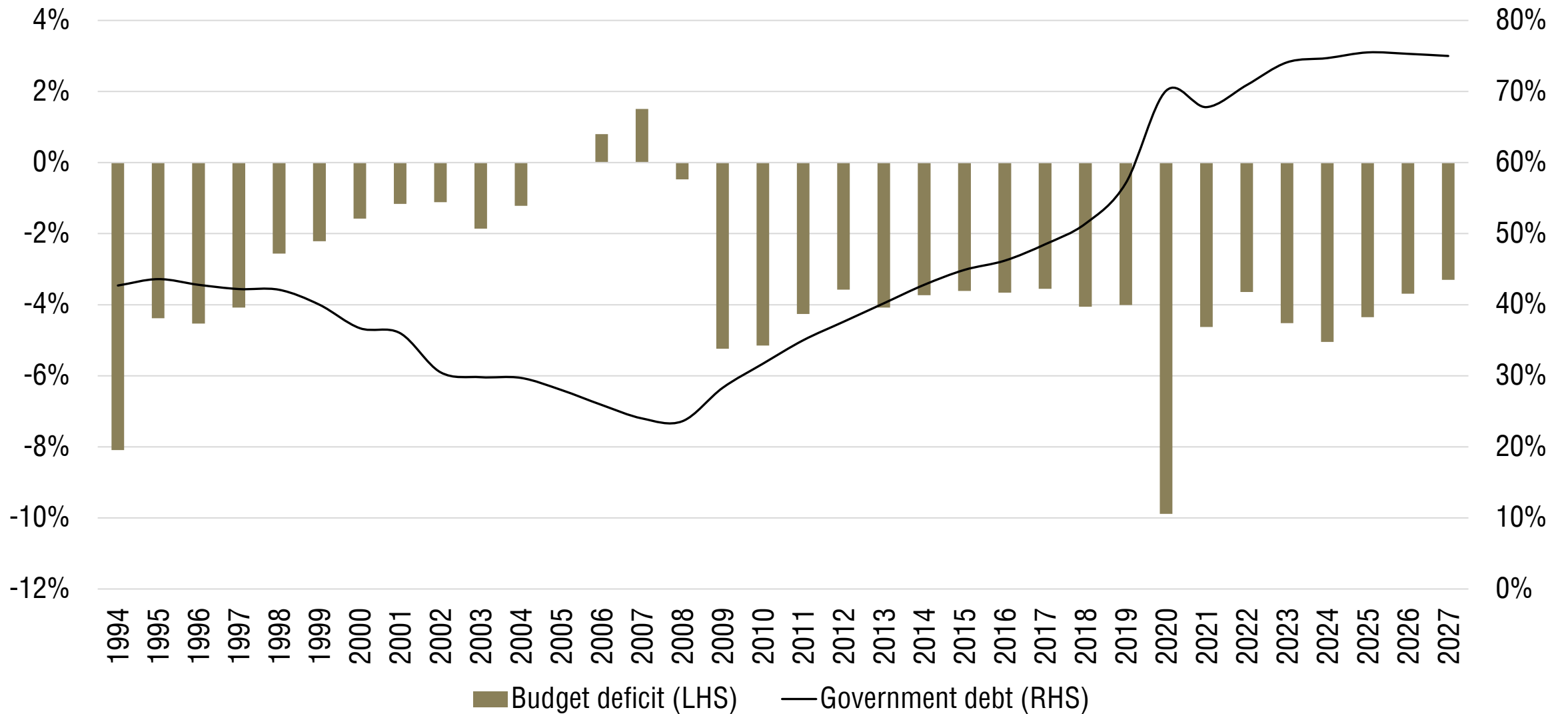


SOUTH AFRICA'S FUTURE:
OPPORTUNITIES, RISKS, AND
THE PATH AHEAD

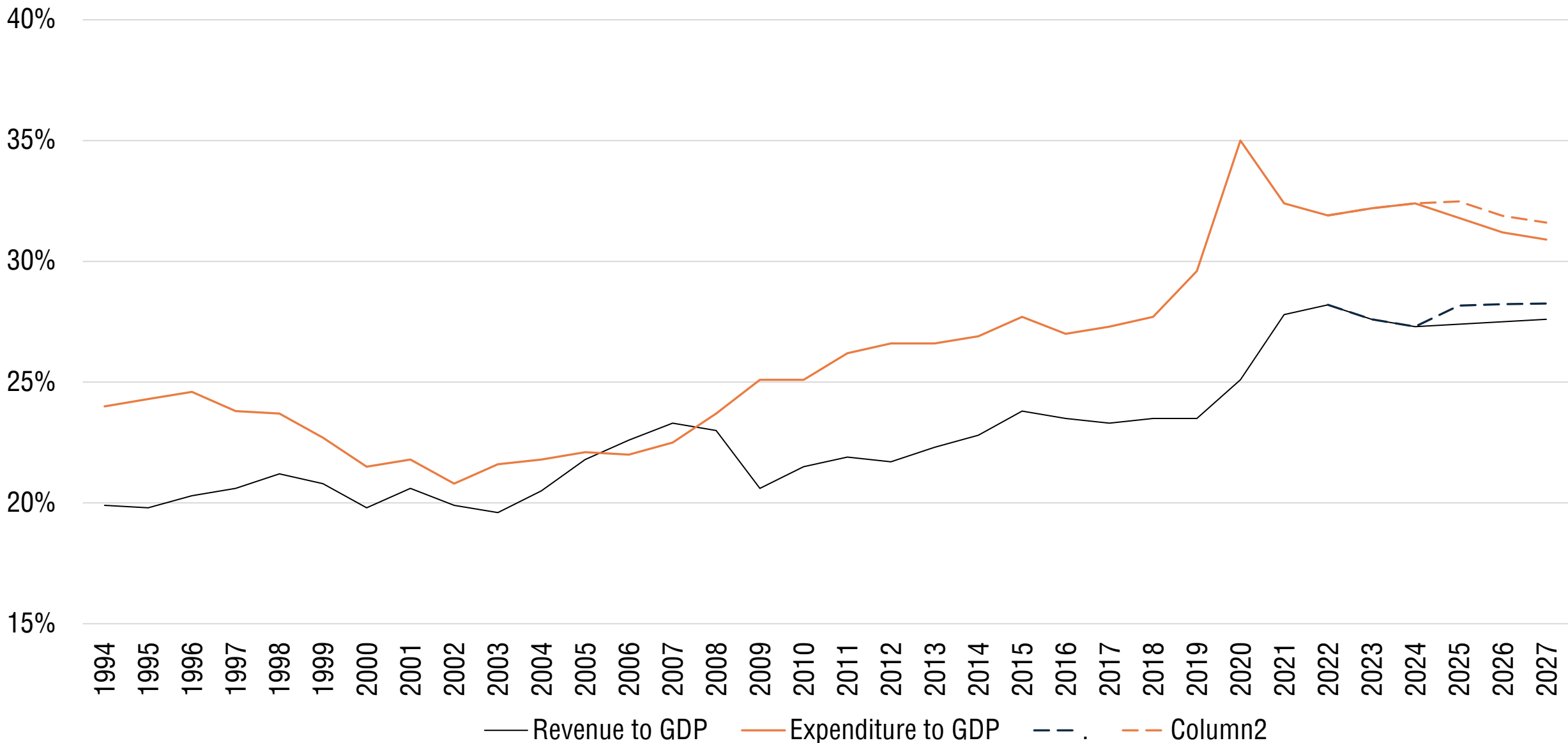
Produced for AfriSam February 2025

PUBLIC ENTHUSIASM FOR THE GNU | 'STRUCTURE' OF THE
DEAL | OPINION AT 100 DAYS | CONFIDENCE | ESKOM |
ECONOMICS v POLITICS OF PAST 30 YEARS | MATHS
EDUCATION AND UNEMPLOYMENT | PROGRESSIVE CAUCUS |
USA ELECTION | SOUTH AFRICA'S GEO-STRAT IMPORTANCE |
SA SCENARIOS

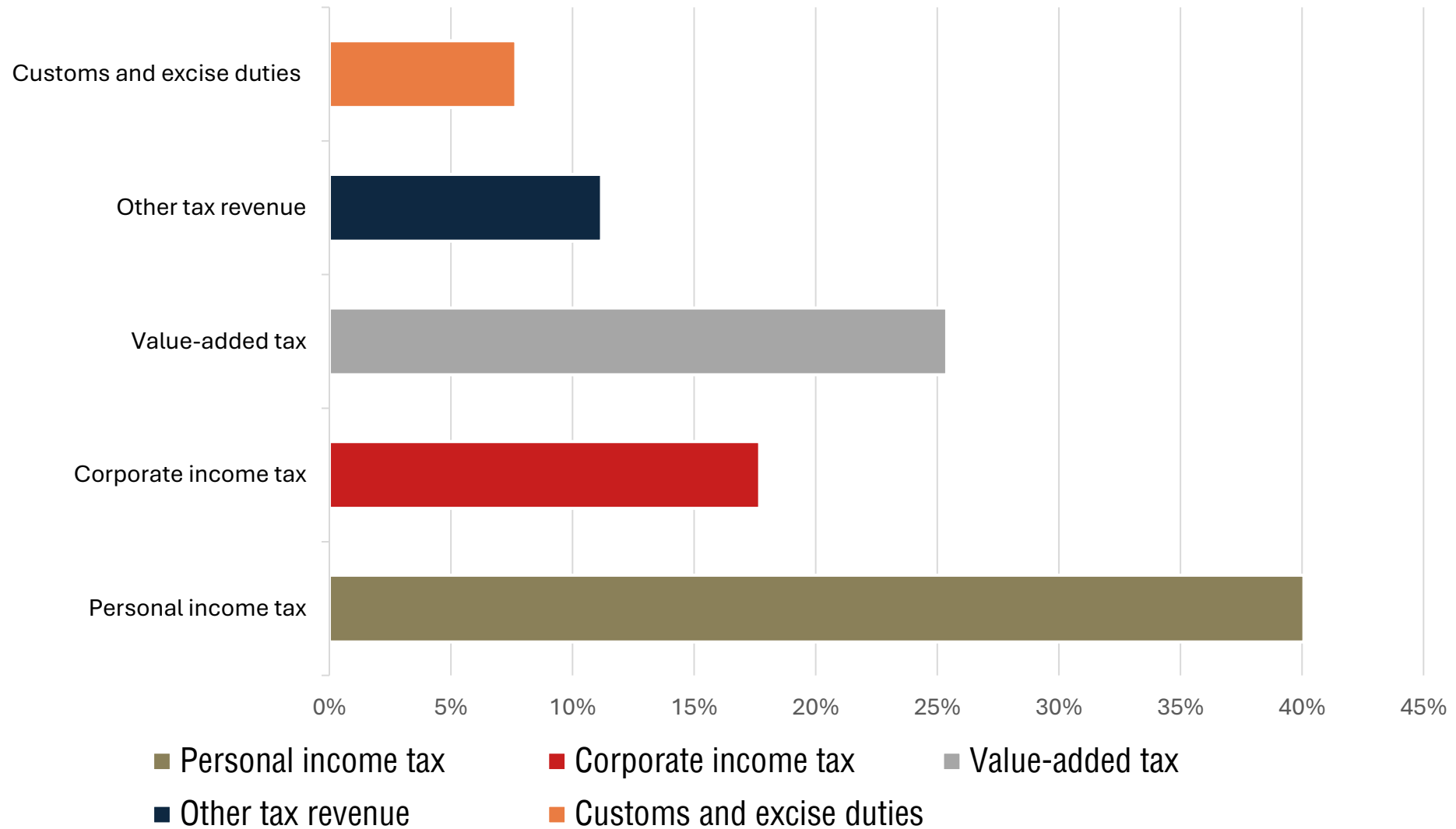
Budget deficit and government debt, 1994-2027



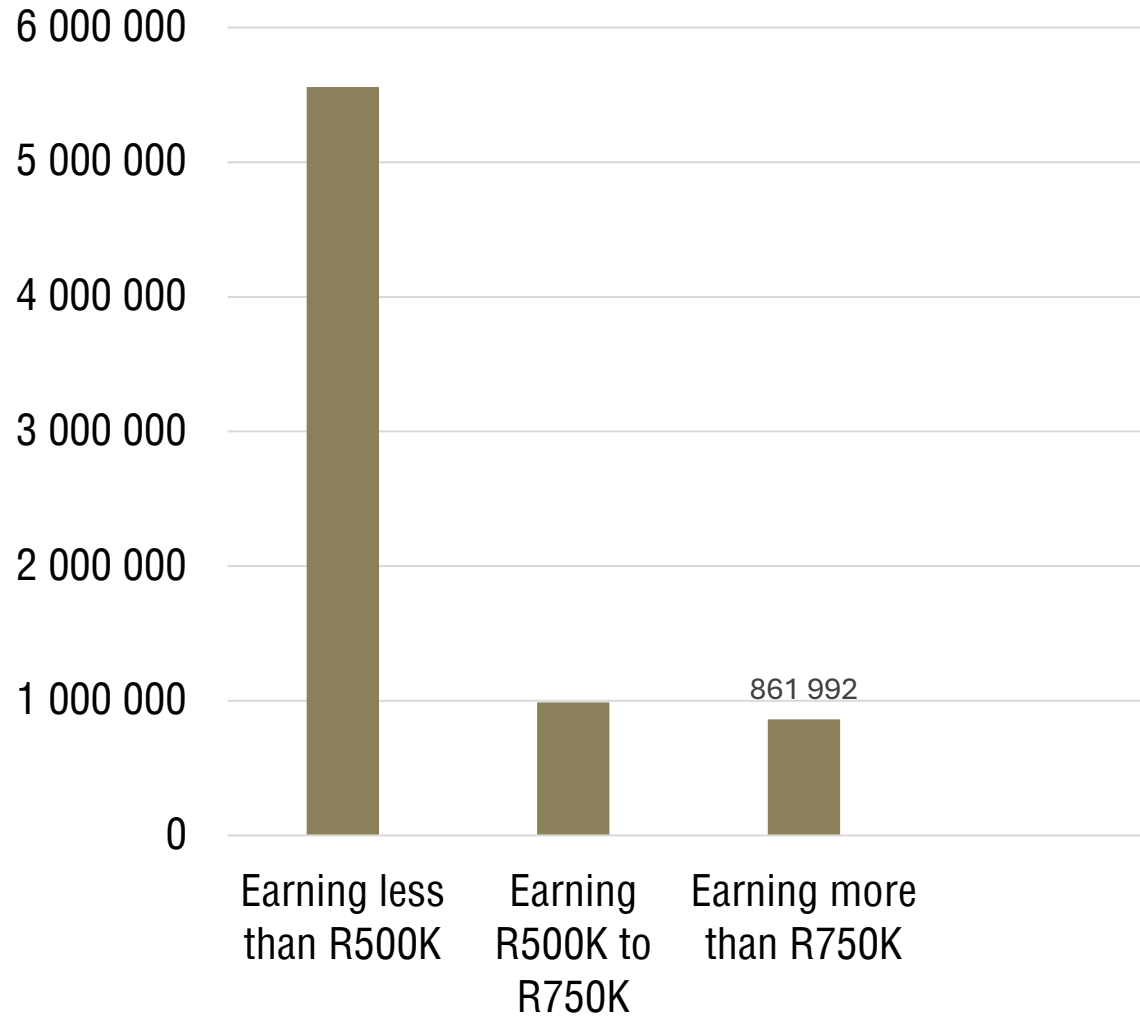
Government revenue and expenditure to GDP, 1994-2027



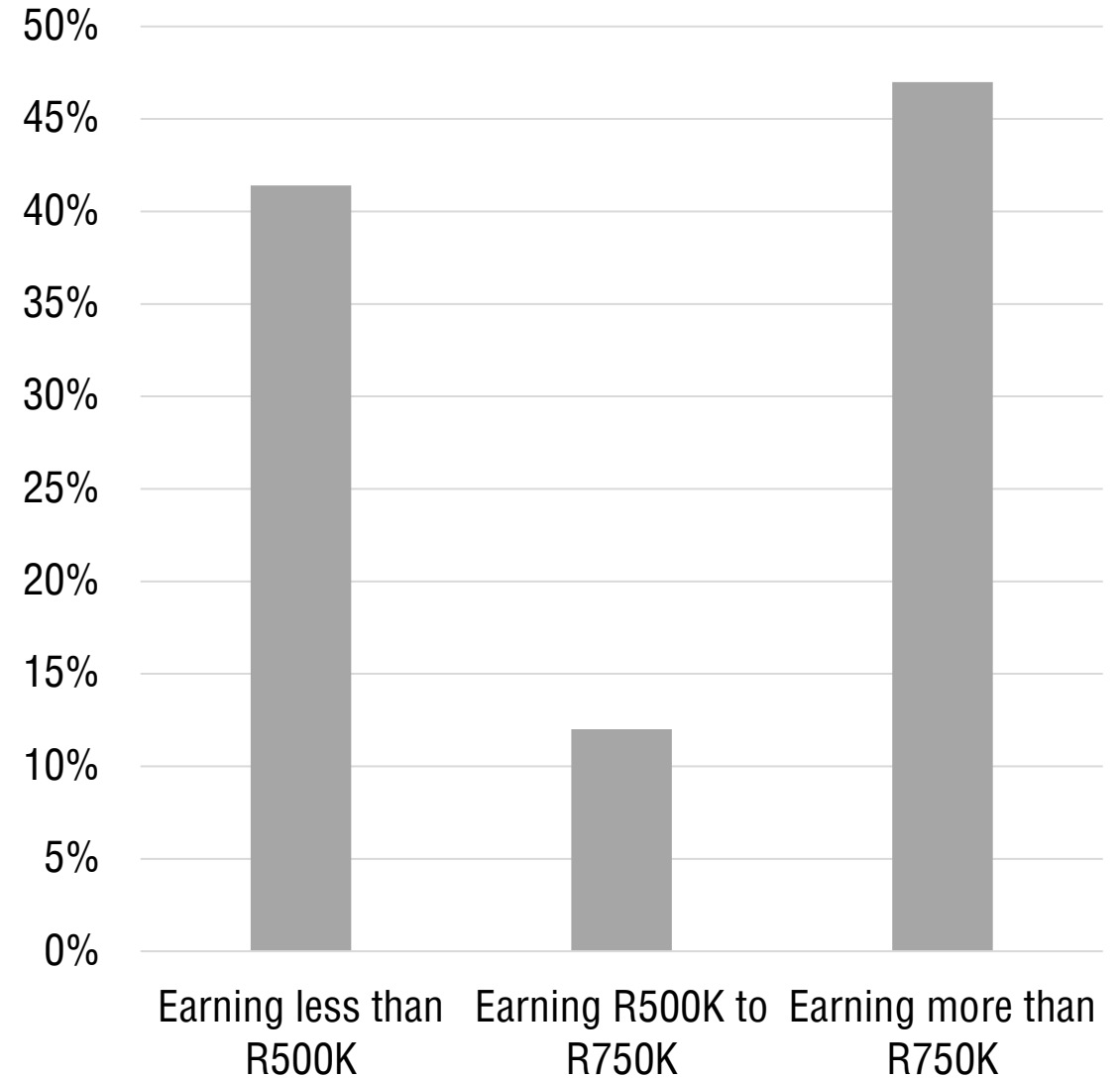
Sources of government revenue



Individual taxpayers that pay tax (and welfare recipients)

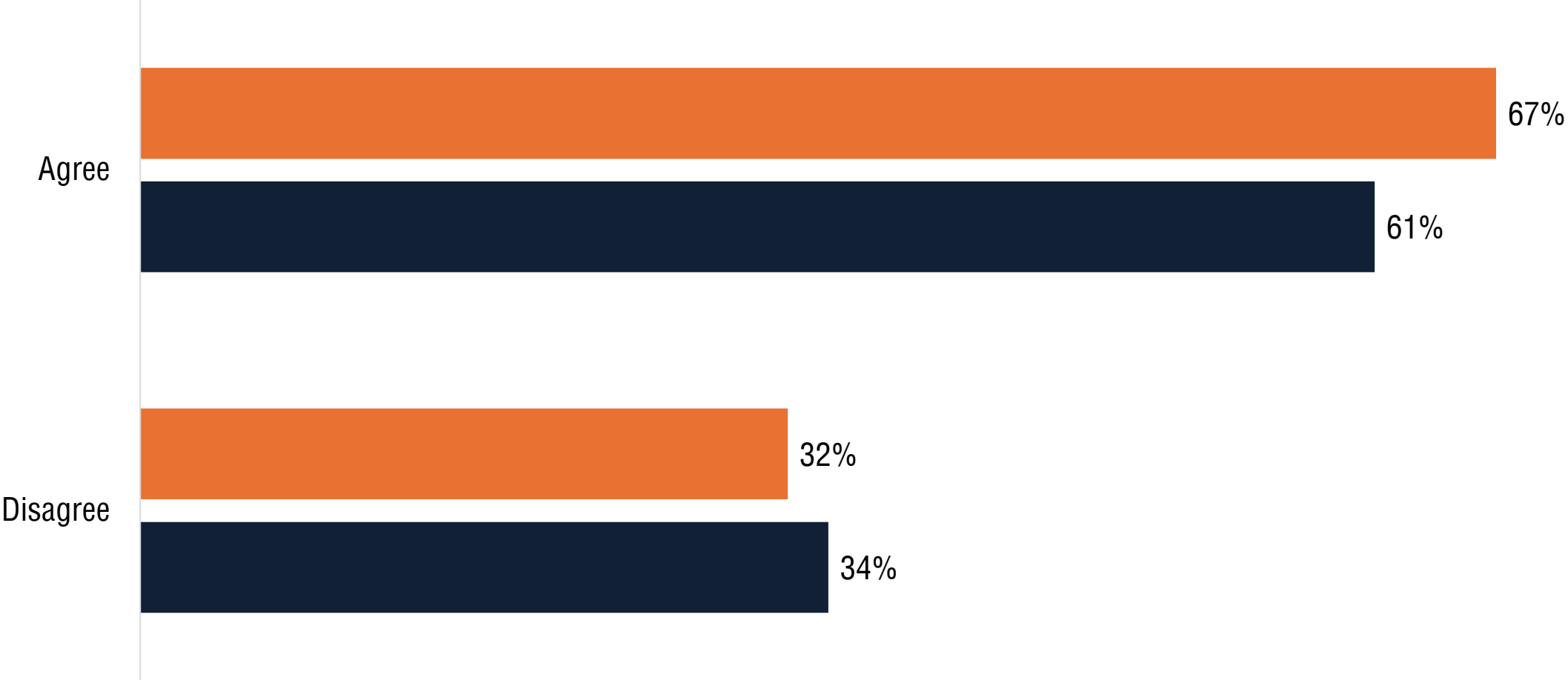


Proportion of income tax received

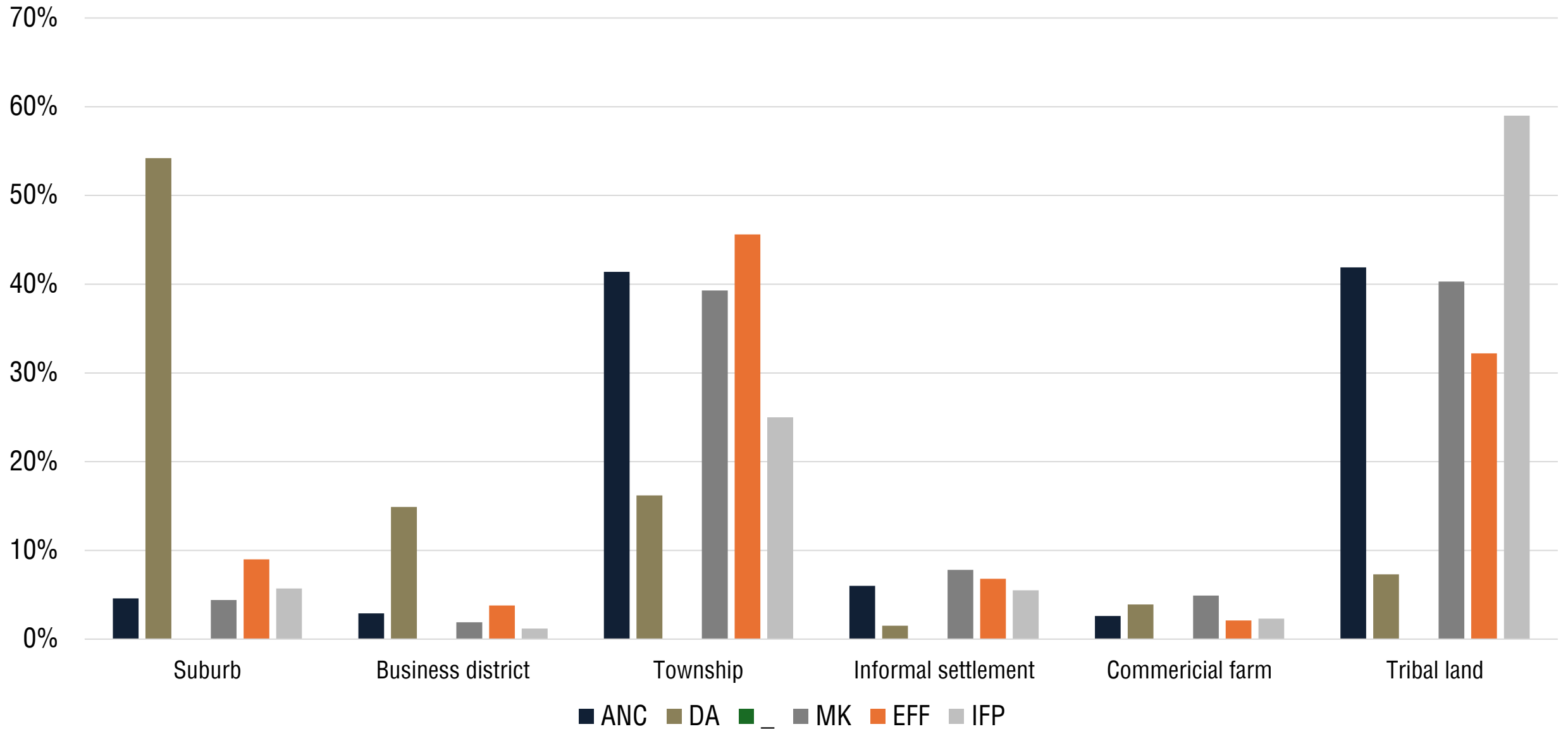


The DA and the ANC both have some good people and some good policies and if they could somehow find a way to work together that would be South Africa's best shot at a stable and prosperous future (pre-election 2024)

White Black



Party support by area for the 2024 South African election



Was the ANC right to exclude the EFF and MK from the GNU? (at 100 days into the GNU)

- It was right for the ANC to keep the EFF and MK out of the GNU
- It was wrong for the ANC to keep the EFF and MK out of the GNU

56%



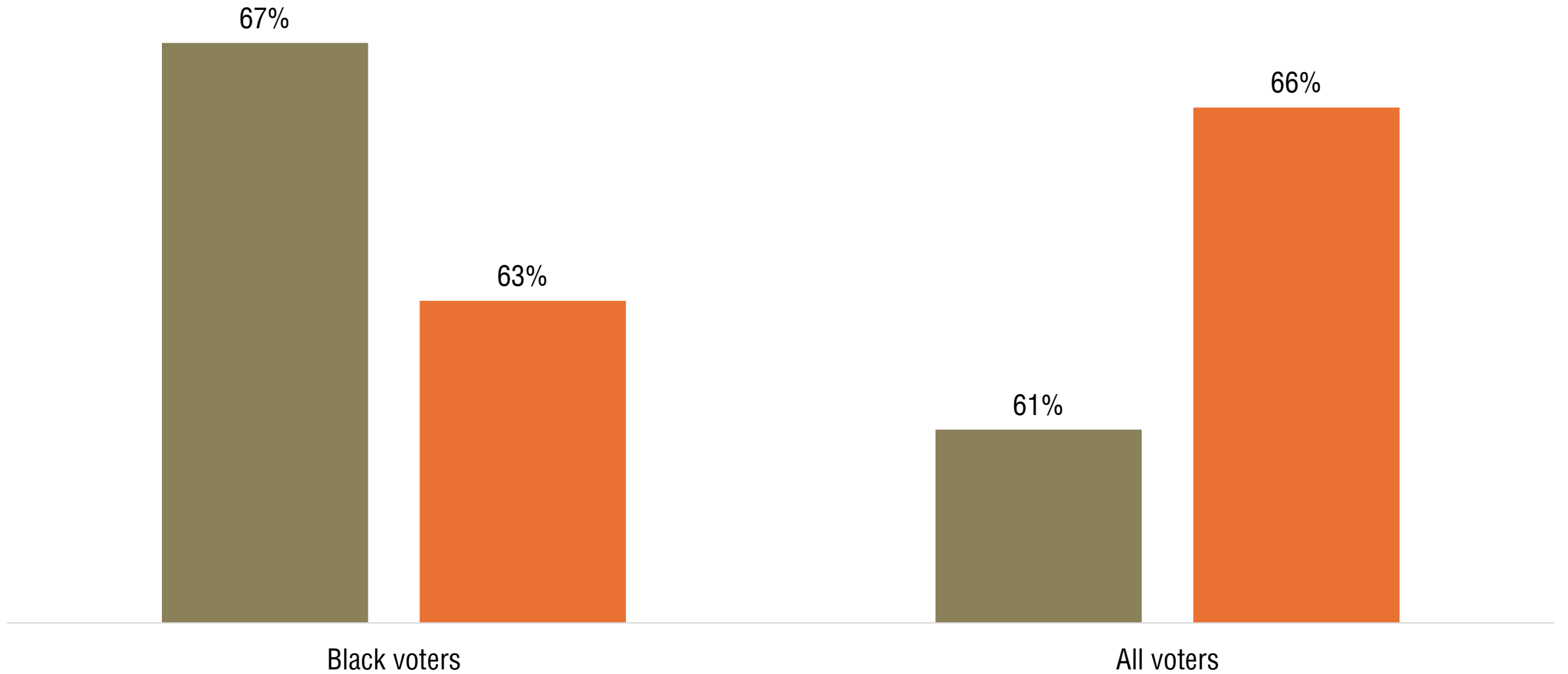
36%



All voters

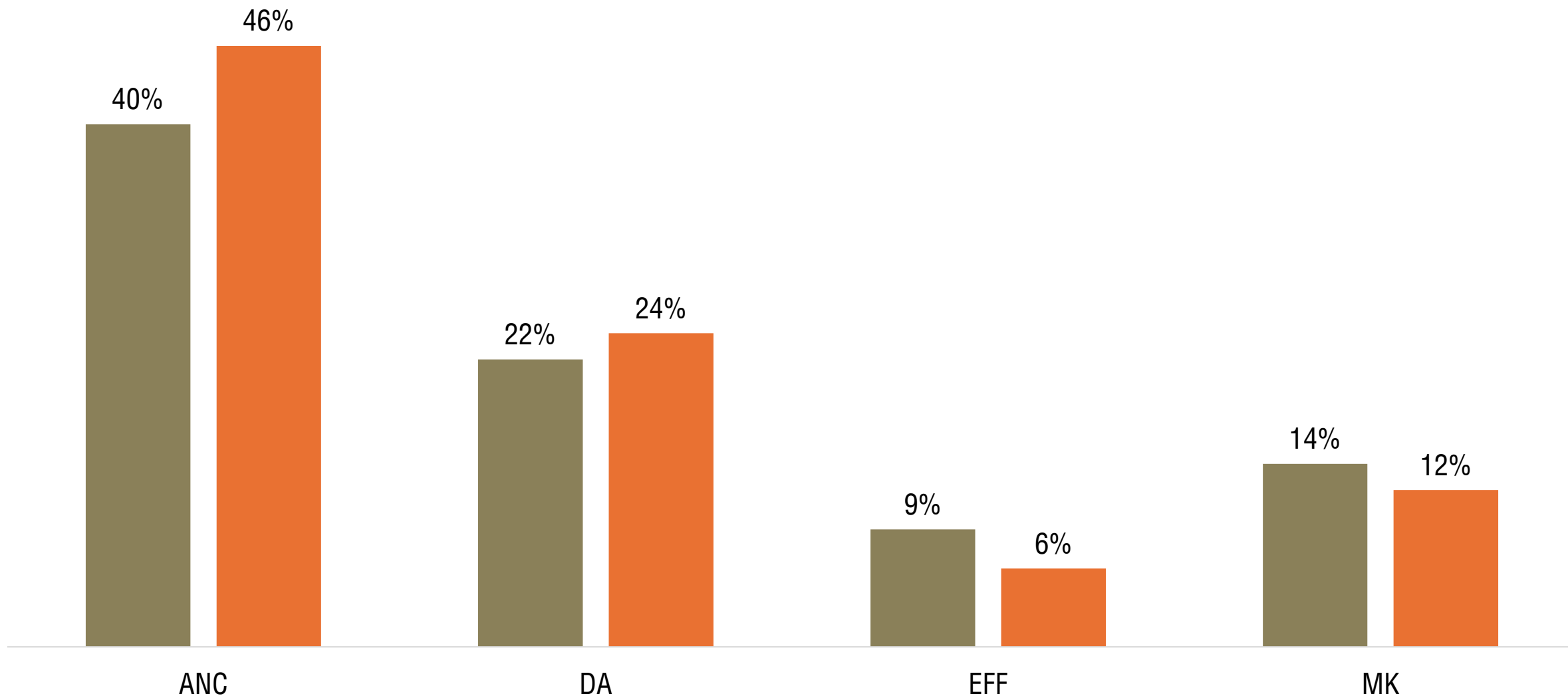
Opinion on party performance (at 100 days into the GNU)

■ ANC is performing well ■ DA is performing well

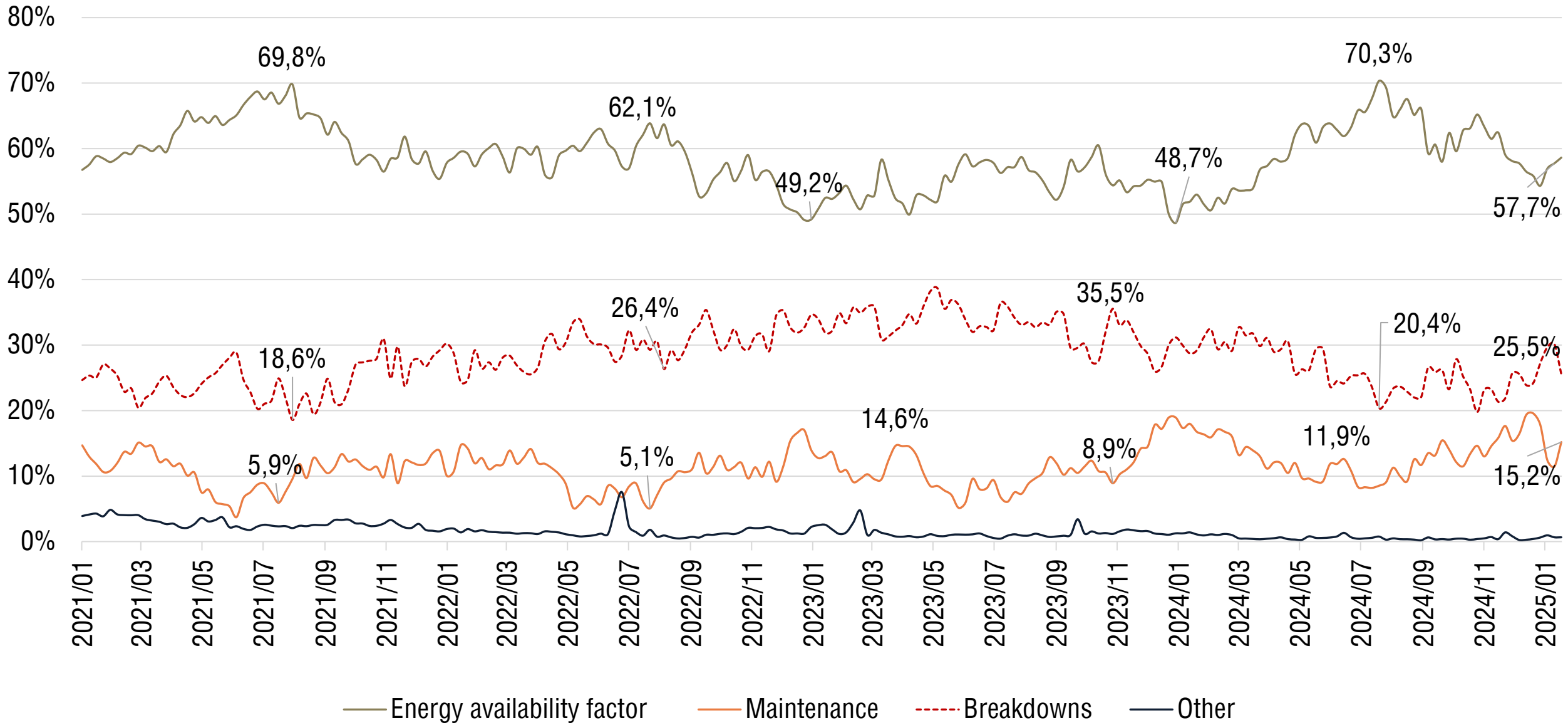


Turnout modelled party standings at election 2024 and at 100-days into the GNU

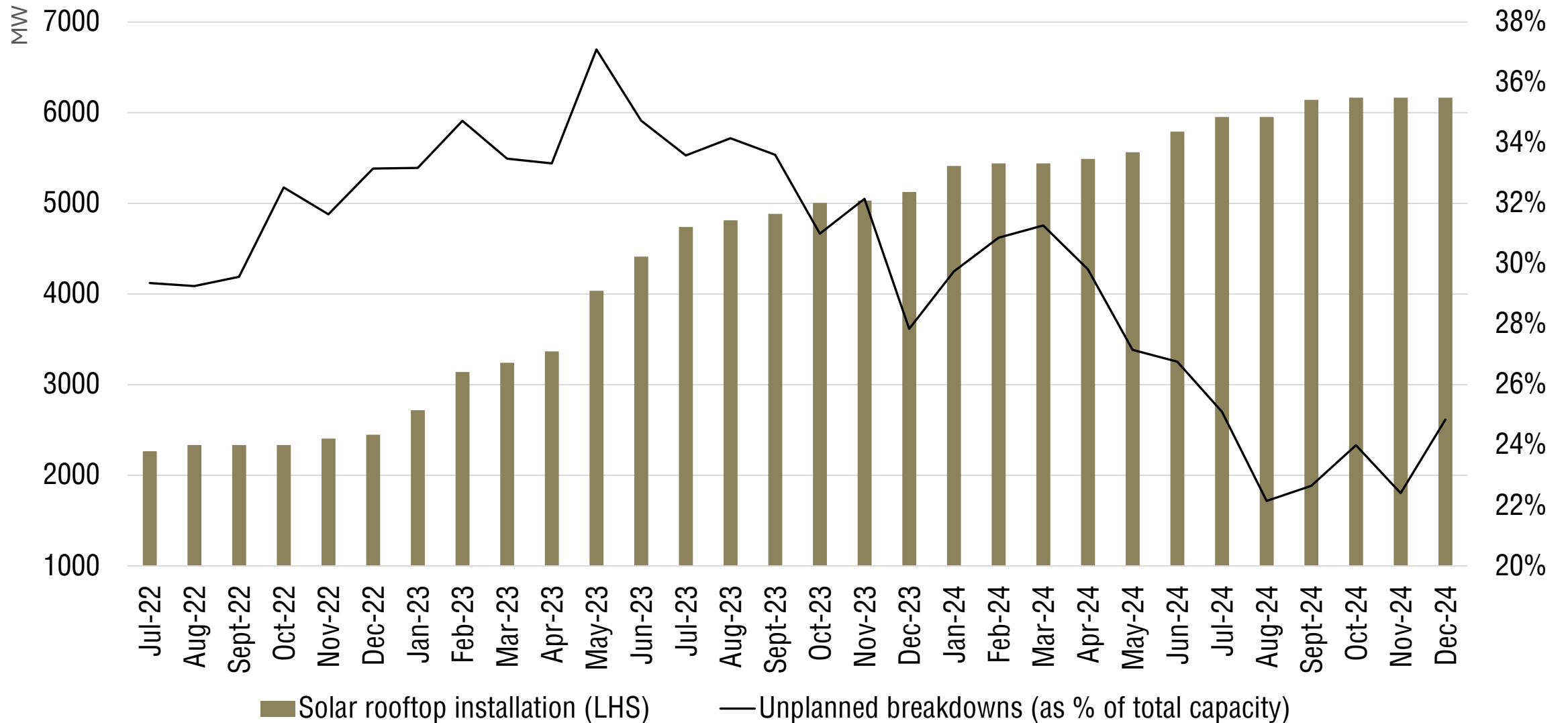
■ Election 2024 ■ Sep-24



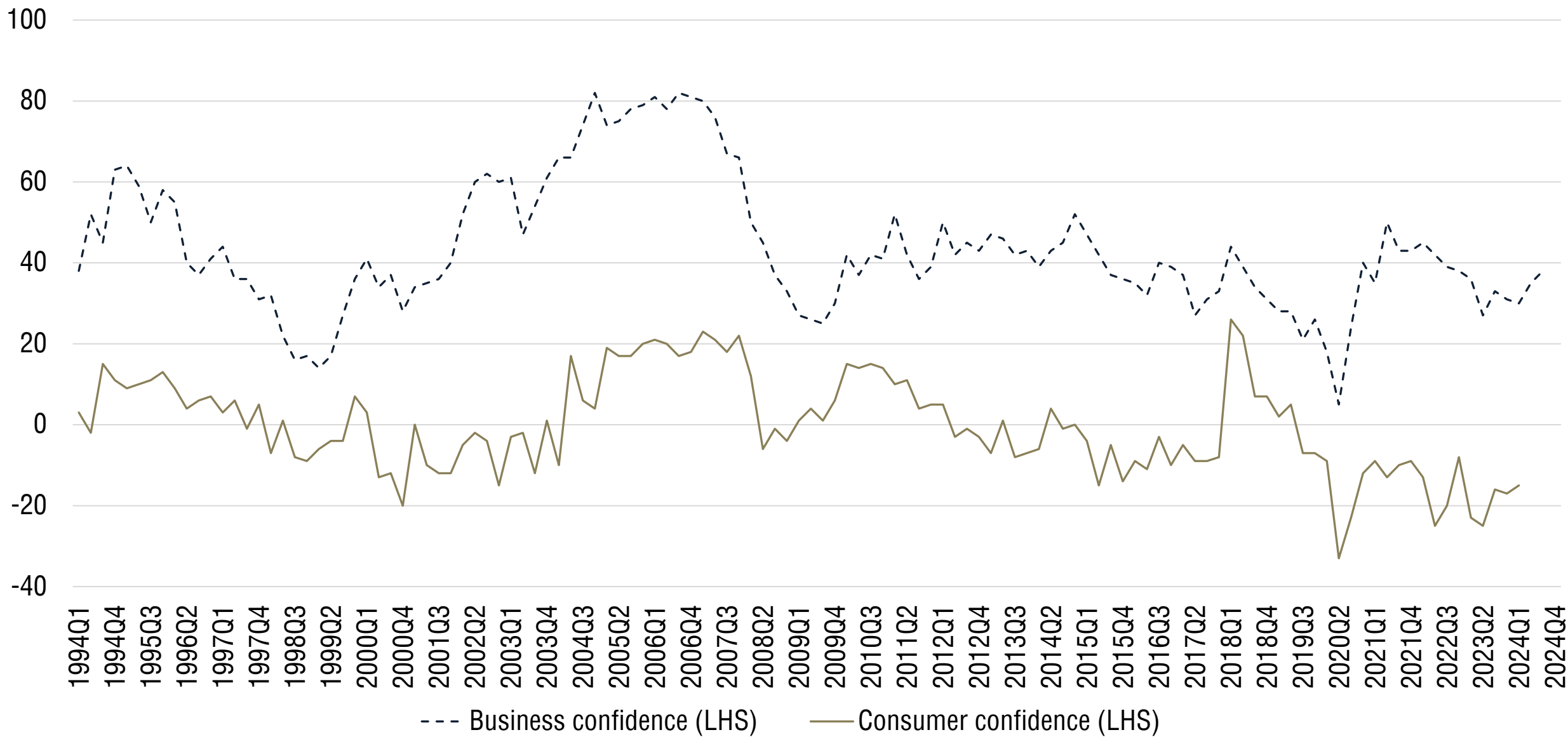
Eskom electricity generation, 2021-2025



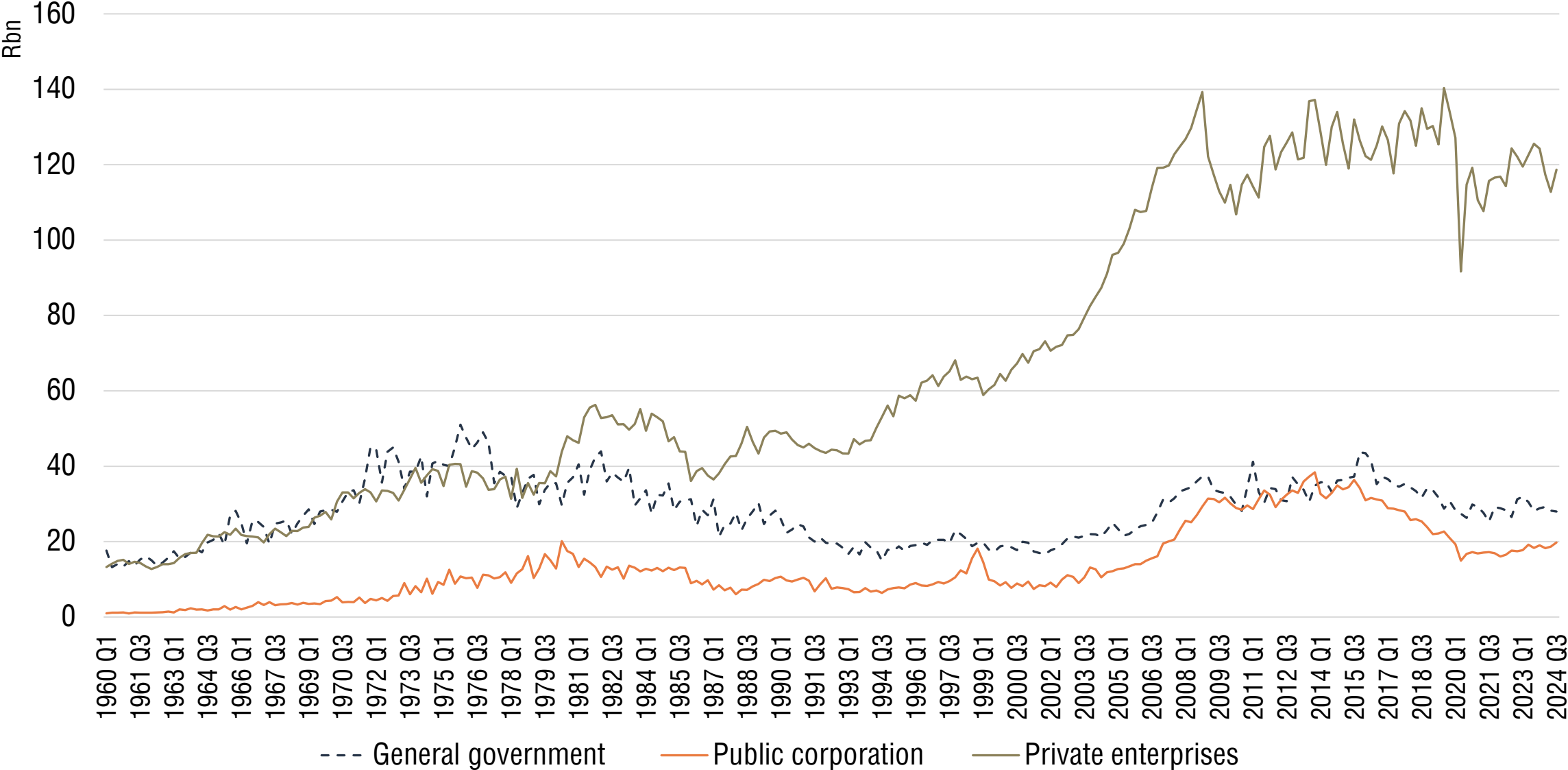
Solar rooftop installation and unplanned breakdowns, 2022-2024



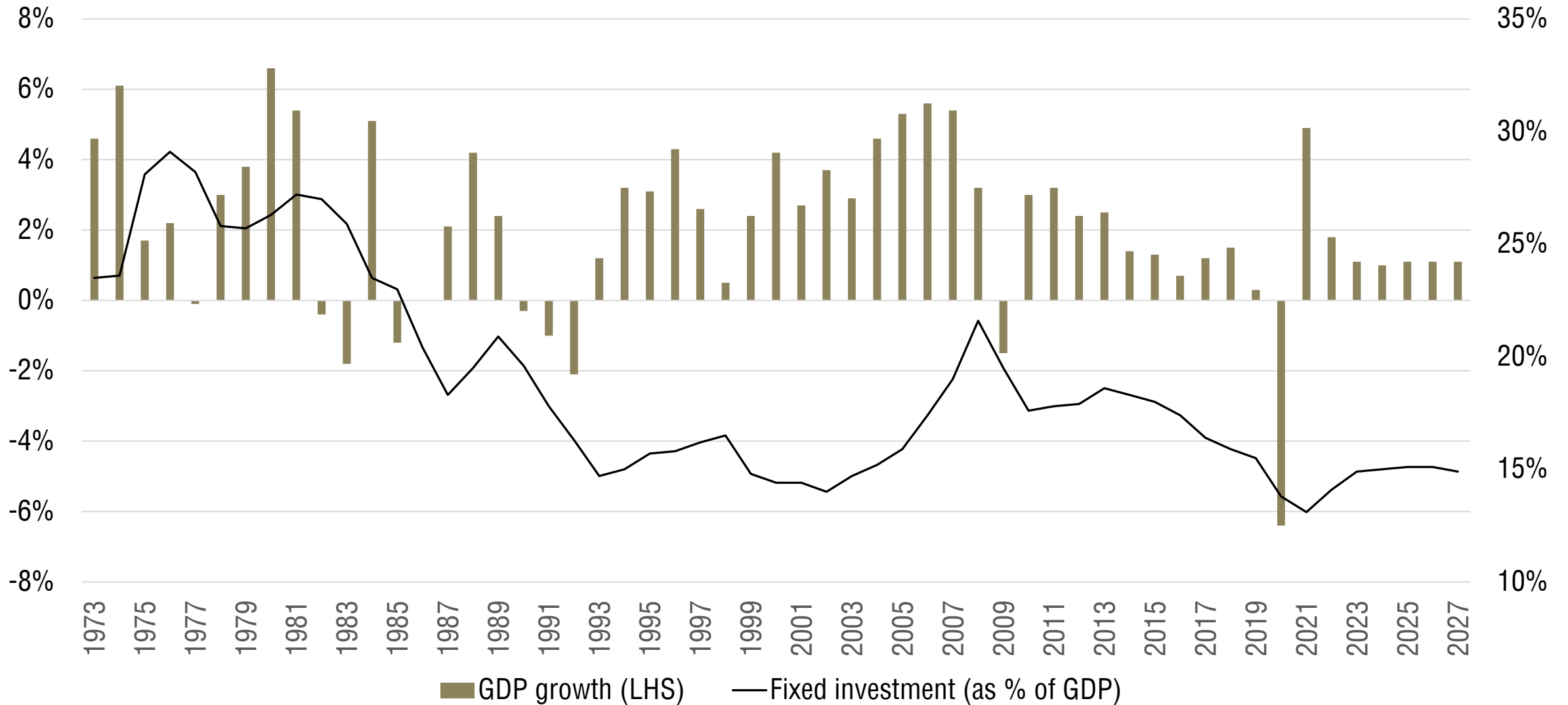
Confidence and SA interest rates, 1994-2024



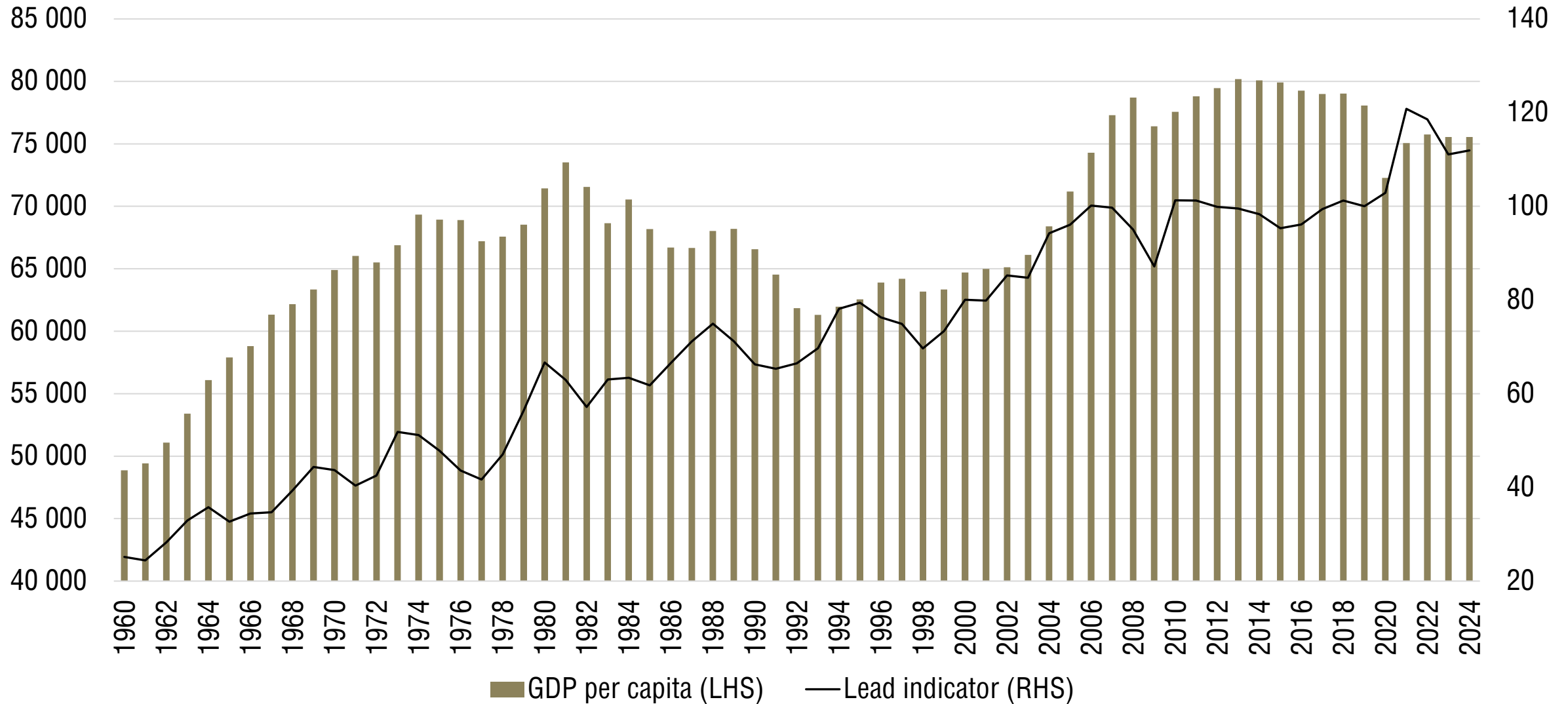
Fixed investment for selected categories, 1960-2024



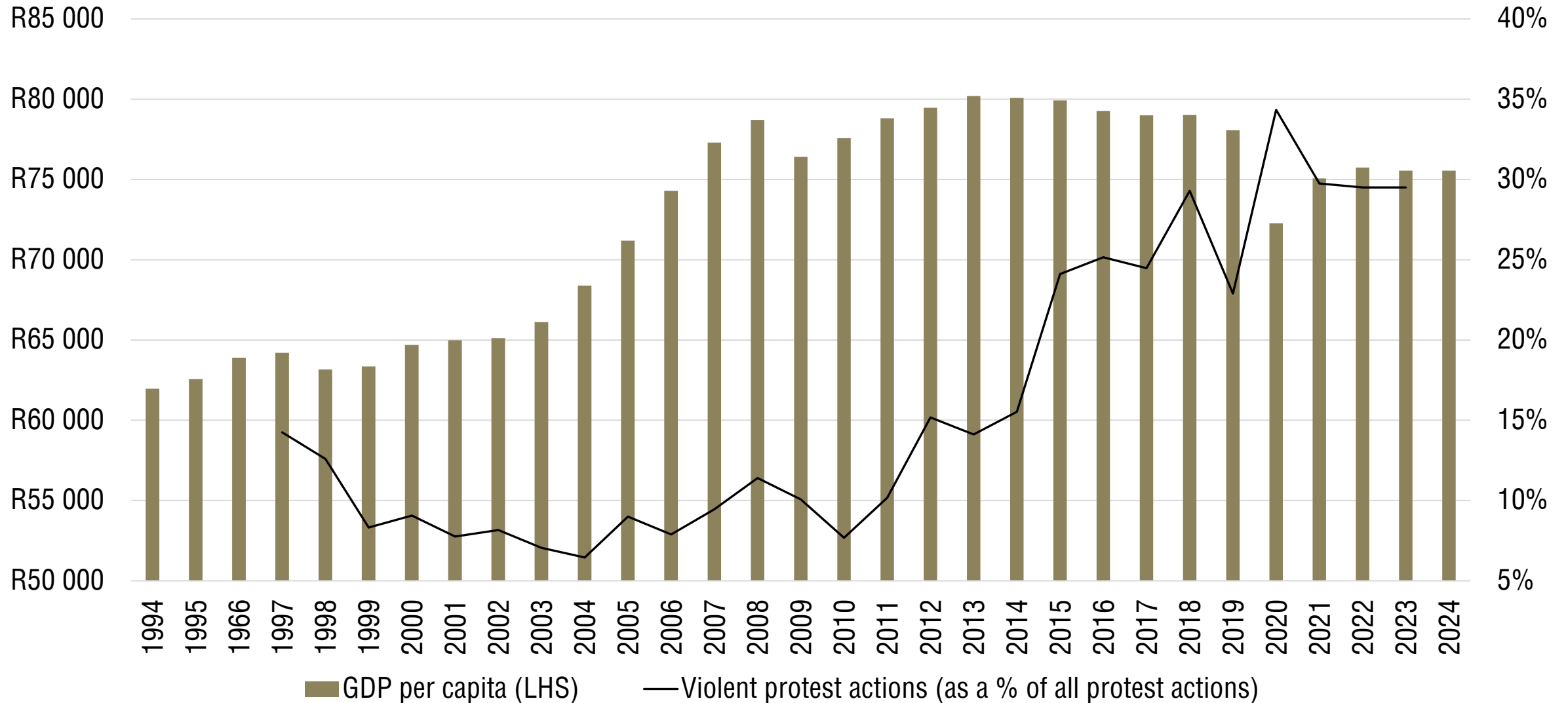
GDP growth and fixed investment, 1973-2024



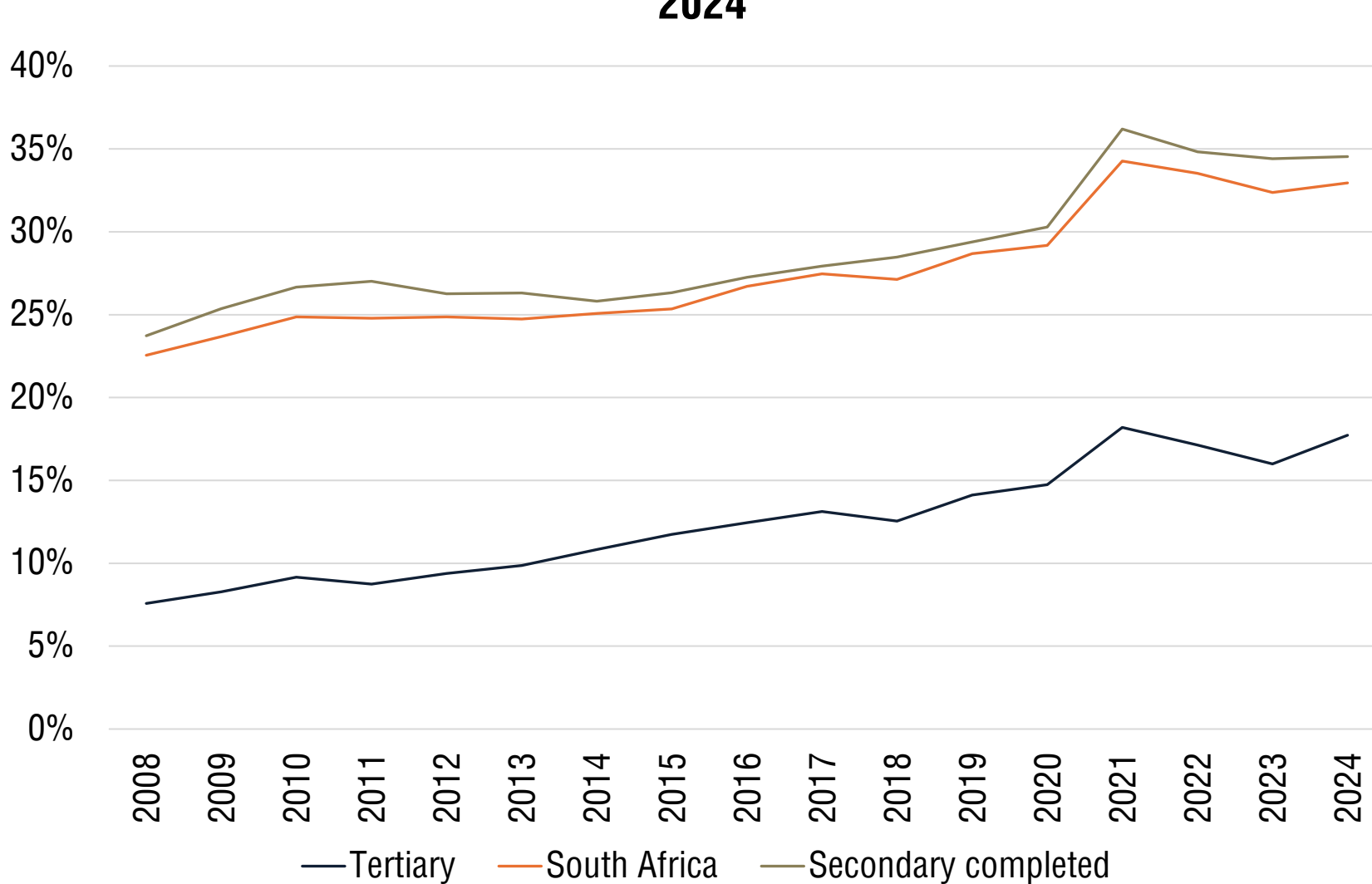
GDP per capita and lead indicator, 1960-2024



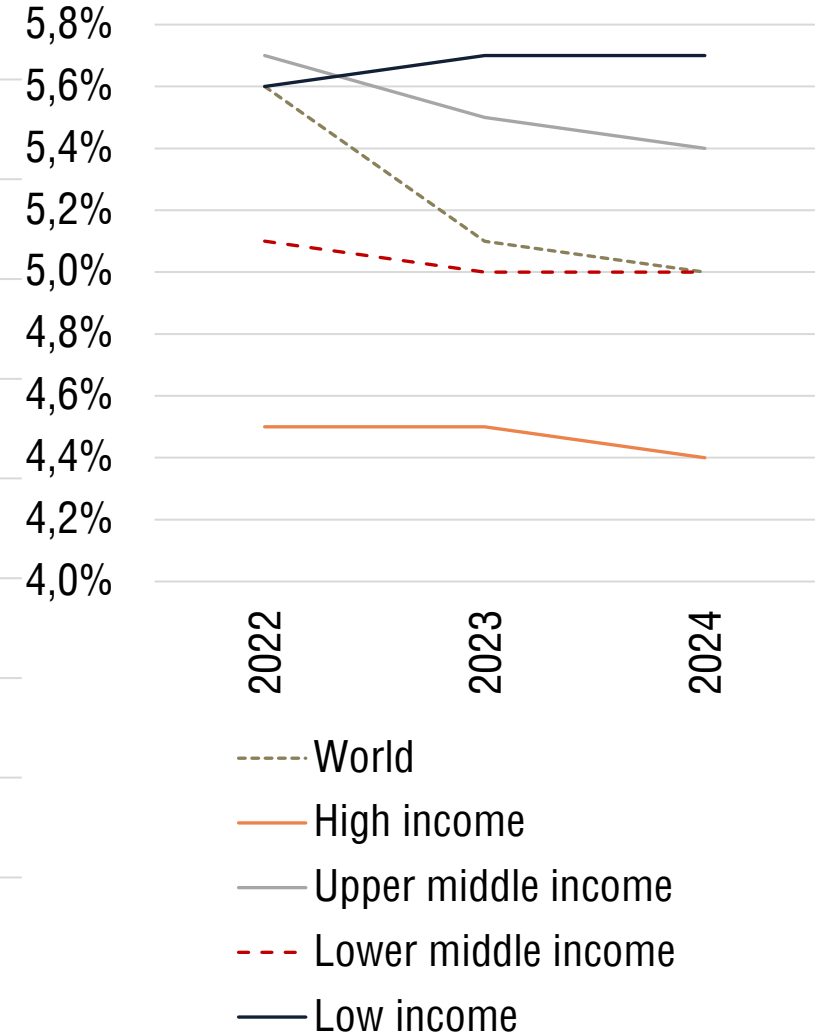
GDP per capita and violent protest actions, 1994-2024



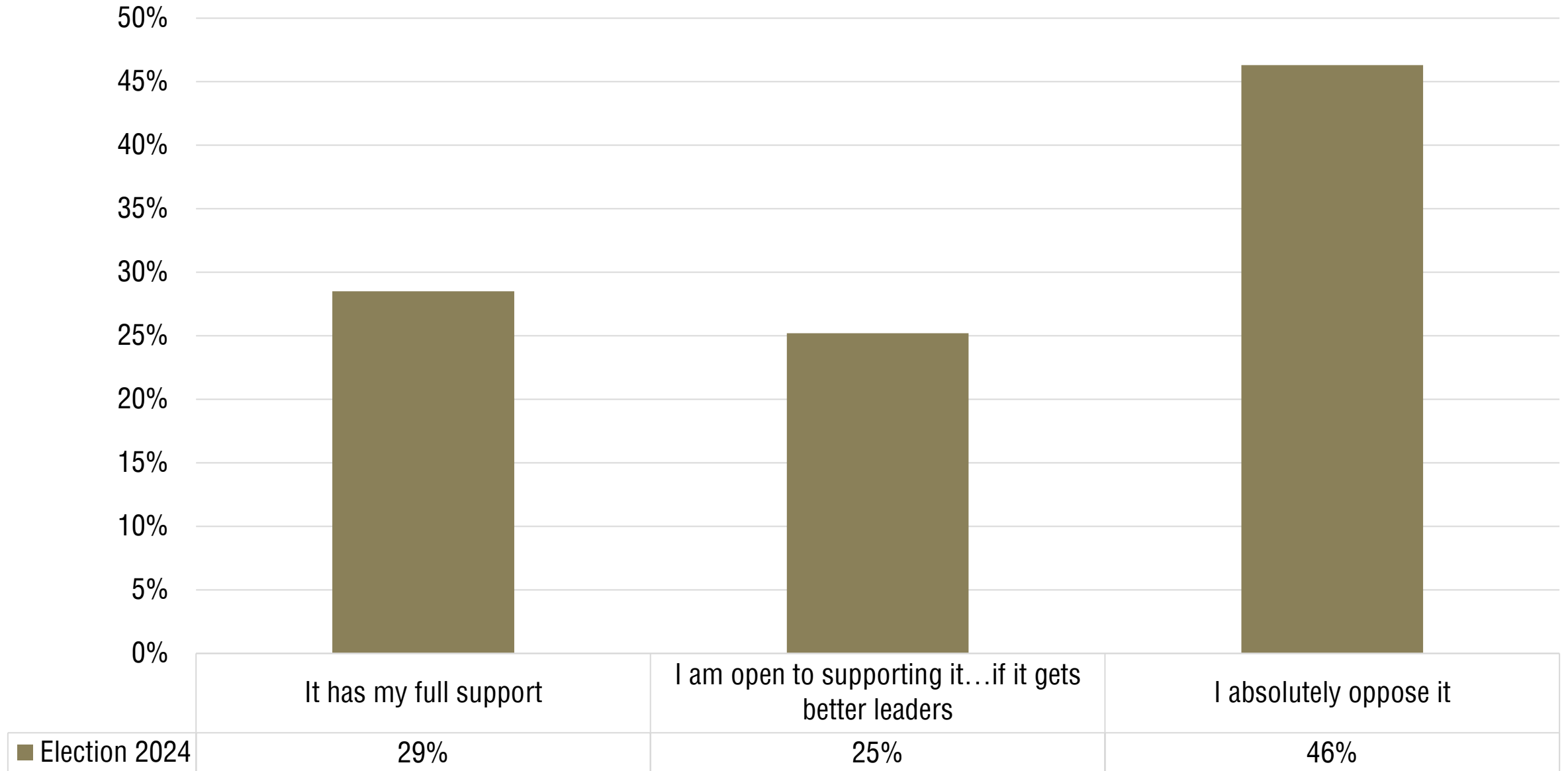
Unemployment rates by the highest level of education, 2008-2024



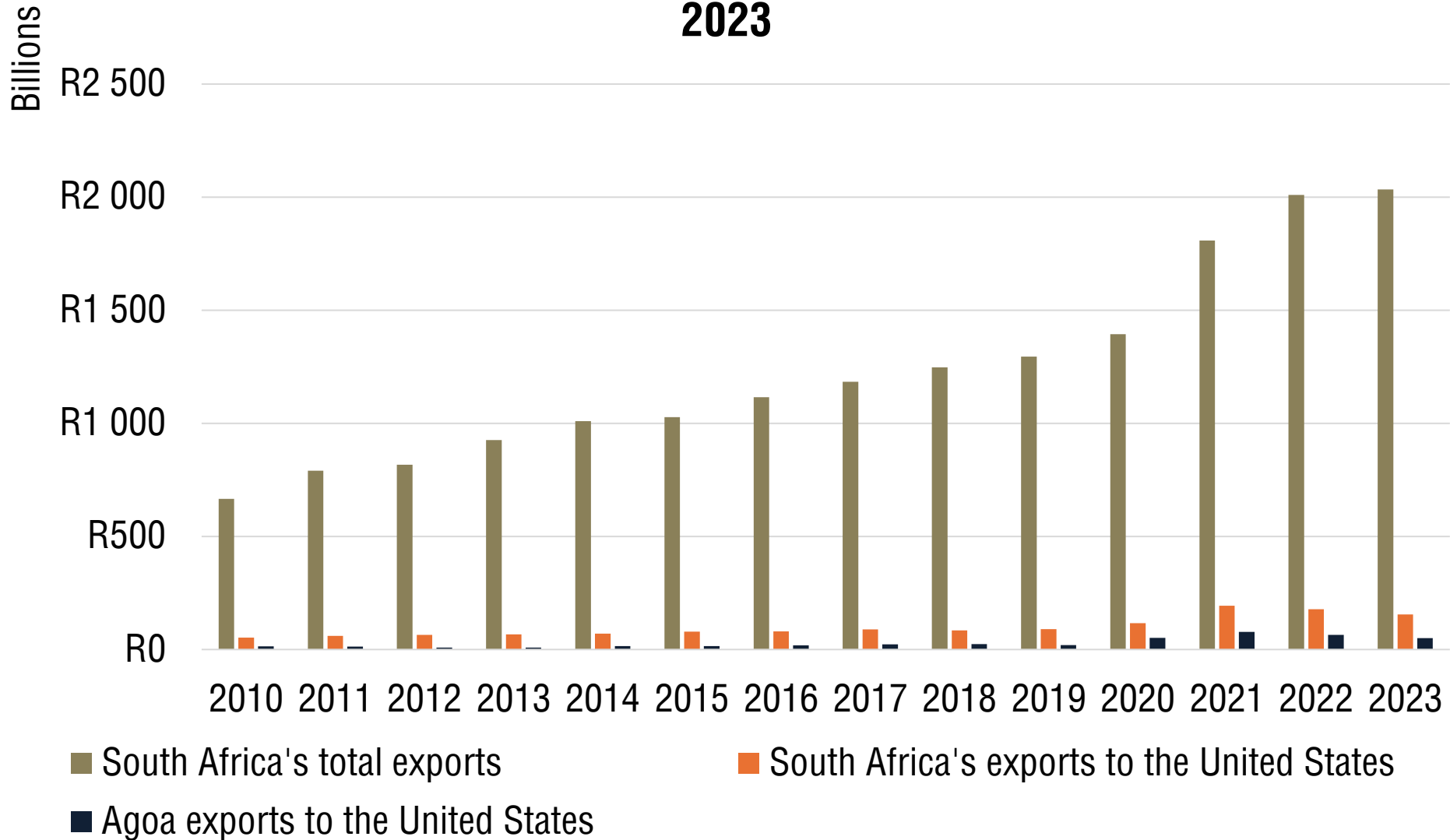
World unemployment



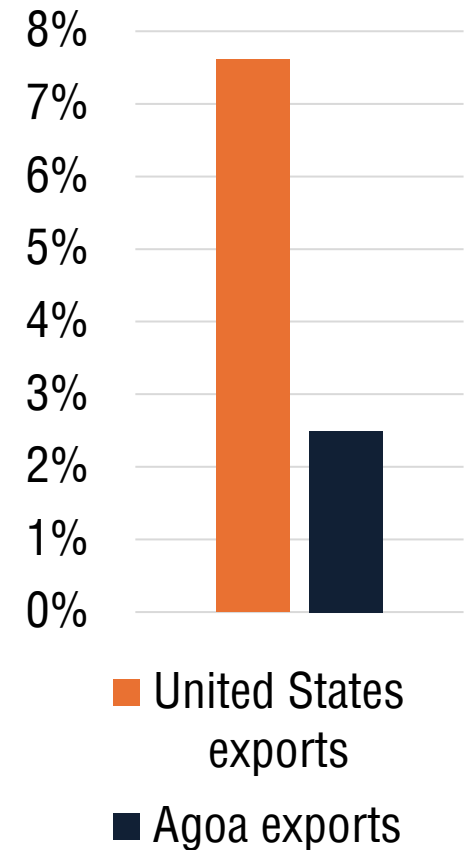
What is your position on the “progressive caucus”? (100 days into the GNU)



South African exports, exports to the US, and AGOA, 2010-2023



South African exports to the US (& US via AGOA) as share of total SA exports



South Africa's geo-strategic importance and the South Pacific/Indian Ocean/South Atlantic strategic triangle



The "Lobito alternative"





FRANS CRONJE

PRIVATE CLIENTS



www.frans-cronje.com



+27 60 585 4169
+1 657 692 5832



frans@frans-cronje.com
bheki@frans-cronje.com